



Nano SPY TH

Mini Temperature & Hygrometry Data logger
2,4GHz radiofrequency communication



Non contractual photo

Presentation

The Nano SPYTH sensor measures, records temperature and hygrometry. It transmits data to a nearby LINK module, by 2.4 GHz radiofrequency communication. The measurements are then sent automatically to the JRI secure Cloud for hosting, and will be managed on JRI MySirius web application.

If thresholds are exceeded, alerts are transmitted in real time to react immediately. Discreet, it is particularly suitable for climate comfort and HVAC applications.

Technical features

Interface	Status LED and On/Off touch sensitive button
Measurement range	-30°C to +70°C and 0 -100% RH*
Accuracy	Temperature : ±0.4°C from +15°C to +25°C and ±0.5°C out of this range Hygrometry between +15°C and +25°C from 20% to 80% : ±4% RH and ±5% RH out of this range
Communication frequency	2,4 GHz (802.15.4)
Memory	10 000 data points
Sensor	SENSIRION SHT25 digital
Operation conditions	-30°C to +70°C
Resolution	0.01
Measuring and transmission period	1 mn
Internal memory recording period	Adjustable from 1 mn to 24 hrs
Response time σ_{90}	~2 mn
Protection	IP40
Case	Polycarbonate – Food contact
Power supply	3,6v Lithium battery - Replaceable
Battery life	6 years
Dimensions and weight	63 x 42 x 25 mm / ~ 60 g
Fixation	Fixing eyelets and integrated magnets
Supplied with	White identification ring Double-sided tape and protective shell User manual can be download on www.jri-corp.com
Compliance	CE, ROHS, FCC, ETS 300-328
Standard calibration points	+2°C/ +25°C/ +38°C 20%/ 50%/ 80% at 23°C

Benefits

- **Easy-to-use**
The sensor is ready to use and has operating and alarm lights



- **Excellent measurement accuracy**



Fixing eyelets



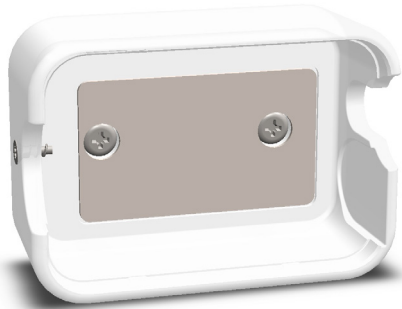
Replaceable battery

FT 11568 EN A

PART NRS
11568 E : Nano SPY TH
11568 X : Nano SPY TH (without battery)

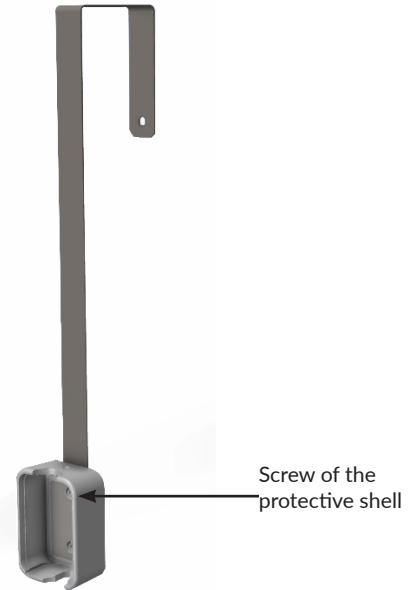
*For humidity, continuous normal use between 20% and 80%RH. Use a maximal 60-hour period to guarantee accuracy out of this range.

Accessories



Protective shell (Included by default) **Part nr. 12715**

The protective shell is used to protect all Nano SPY mini-data loggers from shocks. It is supplied with a double-sided adhesive to be glued to all surfaces and an anti-theft screw for the Nano SPY. It can also be screwed (screws not supplied).



Caliper for protective shell **Part nr. 12716**

The caliper is designed for the fixing of a protective shell of Nano SPY on cabinets with horizontal opening to facilitate cleaning operations. The protective shell of Nano SPY can be directly glued to the bottom of the bracket and/or fixed with screws (provided).