



# Nano SPY Reference

Standard measuring instrument  
for the Nano SPY range sensors



Non contractual photo

## Presentation

A reference device designed to perform calibrations of connected loggers in the Nano SPY range, the Nano SPY Reference recorder measures and records temperature with high precision and has a 3m cryogenic probe. Its metrological specificities allow it to be perfectly adapted to the monitoring of equipment with very limited temperature ranges.

## Technical features

Interface	Status LED and On/Off touch sensitive button
Measurement range	-196°C to +200°C
Accuracy	± 0.15°C from 0°C to +40 °C ± 0.20°C from -30°C to 0°C and from +40 to +130°C ± 0.30°C from +130°C to +200°C ± 0.50°C out this range ± 0.60°C to -196°C
Communication frequency	2,4 GHz (802.15.4)
Memory	10 000 data points
Sensor	External Class A PT 100 - stainless steel Ø2,9x25mm 3m cable lenght
Operating conditions	-20°C to +50°C
Resolution	0.01
Measuring and transmission period	1 mn
Internal memory recording period	Adjustable from 1 mn to 24 hrs
Response time $\sigma_{90}$	~ 2mn
Protection	IP65
Case	Polycarbonate – Food contact
Power supply	Lithium 3,6v battery - Replaceable
Battery life	6 years
Dimensions and weight	63 x 42 x 25 mm / ~ 60 g
Fixation	Fixing eyelets and integrated magnets
Supplied with	Brown identification ring Double-sided tape and protective shell User manual can be download on <a href="http://www.jri-corp.com">www.jri-corp.com</a>
Compliance	CE, ROHS, FCC, ETS 300-328
Standard calibration points	+15°C ; +45°C

## Benefits

- **Easy-to-use**  
The sensor is ready to use and has operating and alarm lights



- **Excellent measurement accuracy**



Fixing eyelets

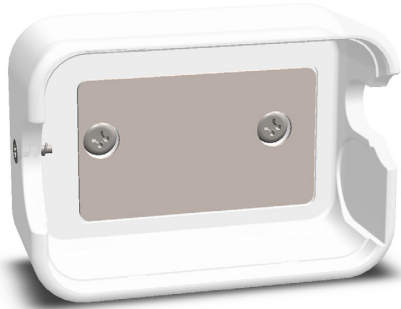


Replaceable battery and non disconnectable probe

PART NRS  
12521 E : Nano SPY Référence  
12521 X : Nano SPY Référence without battery

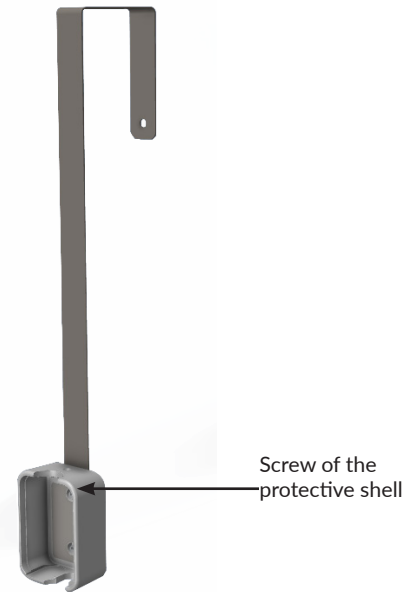
FT 12521 EN A

## Accessories



**Protective shell (Included by default)**  
**Part nr. 12715**

The protective shell is used to protect all Nano SPY mini-data loggers from shocks. It is supplied with a double-sided adhesive to be glued to all surfaces and an anti-theft screw for the Nano SPY. It can also be screwed (screws not supplied).



**Caliper for protective shell**  
**Part nr. 12716**

The caliper is designed for the fixing of a protective shell of Nano SPY on cabinets with horizontal opening to facilitate cleaning operations. The protective shell of Nano SPY can be directly glued to the bottom of the bracket and/or fixed with screws (provided).