



Data sheet Green Digital Sensor Reference

GREEN DIGITAL SENSOR REFERENCE (-50° à 200°C)

Use as a standard for calibration operations on JRI recorders and probes or other brands. Its metrological performance makes it ideal for monitoring equipment with very low MPEs. Its response time meets EN 15140 requirements for mapping.



non-contractual photo

Ref. 13947

Presentation

The Reference Green Digital Sensor is a temperature sensor with an internal memory containing calibration coefficients. As a result, this sensor can be calibrated simply by exchanging it, or using the JRI MySirius Calibration module, thus limiting the need to mobilize your standard. Its metrological performance is optimized by error modeling with a second-degree function (X^2) provided in the JRI calibration certificate. It has a thin cable to allow passage through the door seal of equipment, and adapts easily to any calibration environment (oven, baths, etc.). This digital probe is compatible with Nova SPY Digital, LoRa SPY Digital and Nano SPY Digital loggers.

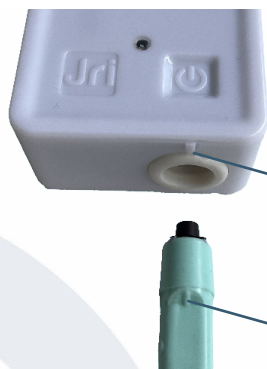
Technical specifications

GREEN DIGITAL SENSOR REFERENCE (-50° +200°C)	
Sensing element size	Ø2,2x35mm
Sensor protection	IP 68
Plug-in connector	débrochable - IP 40
Cable type	Câble PFA - Ø2,2mm - 3m
Measurement range	de -50° à +200°C
Measurement accuracy	± 0.15°C from -40°C to +80°C Possibility to have specifications on the rest of the range by COFRAC calibration with a minimum of 5 points with modeling
Resolution	±0,01°C
Time response σ_{63}	~30 sec
Compatibility	MySirius from version 5.0 onwards LoRa SPY D (Ref. 11809 and 12276) Nano SPY D (Ref. 13491) Nova SPY D (Ref. 13756) 3m extension cable for Green Digital Sensor (Ref. 13870) 12m extension cable for Green Digital Sensor (Ref. 13871)

Benefits

- Impact resistance
- Compatible with new EN 15140 standard
- Low drift
- Easy interchangeability
- Optimization of calibration processes

Sensor connection diagram



- Align the mark on the probe with the mark on the Nova SPY Digital.

- Push in the probe until you hear a click to indicate that it is securely in place.

Mark on Nova SPY Digital

Mark on the Digital Sensor

